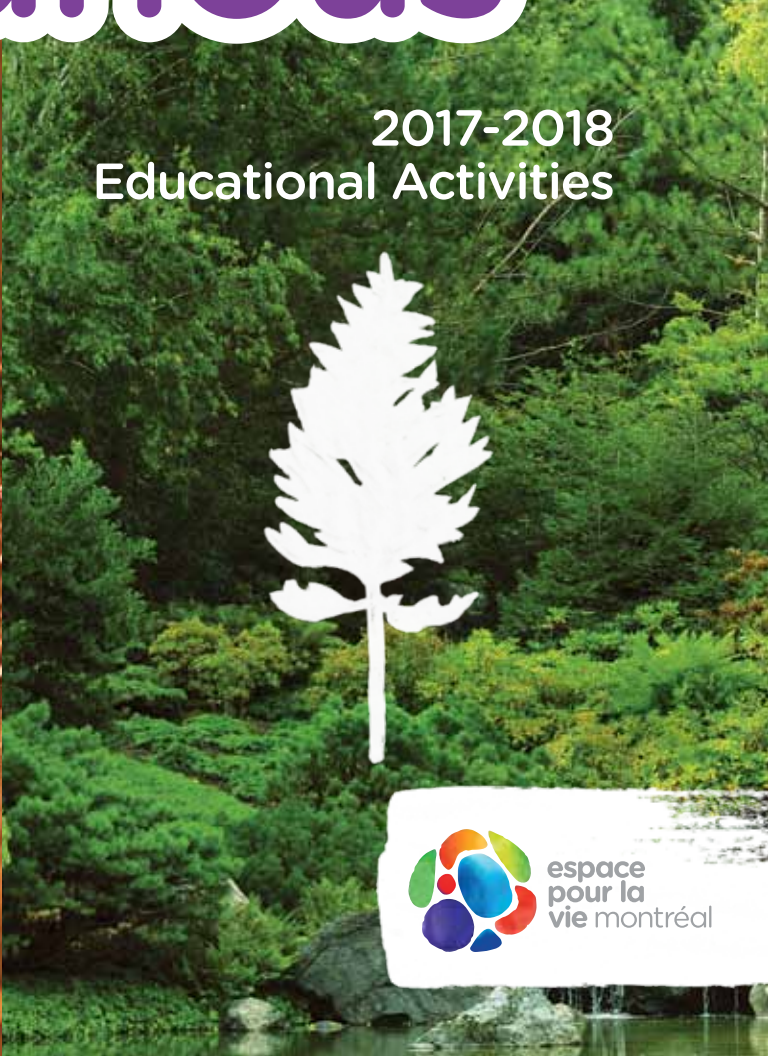




naturally curious



2017-2018
Educational Activities

Activities
without
additional fees!





TABLE OF CONTENTS

Tools to Make Your Job Easier	4
Don't Miss These Great Activities!.....	6
Educational Activities for Students.....	8 to 23
Preschool - Daycare and Kindergarten.....	8
Elementary Cycle One.....	11
Elementary Cycle Two.....	14
Elementary Cycle Three	19
Secondary.....	22
Specialized Activities	24
Classroom Tools.....	25
Reservation Conditions	28
Rates.....	28
Reservation Form.....	29
General Information.....	30
Summary Table	16



TOOLS TO MAKE YOUR JOB EASIER

A **PORTAL** WHERE YOU CAN EASILY FIND THE INFORMATION YOU NEED



A **SEARCH ENGINE** FOR EDUCATIONAL ACTIVITIES



CONTENT TO PIQUE YOUR CURIOSITY



ALL DETAILS ON OUR **MAJOR EVENTS**



EDUCATIONAL TOOLS TO PREPARE YOUR VISIT



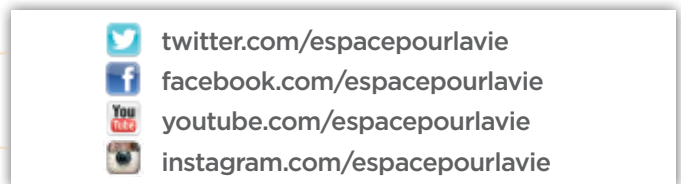
ARTICLES BY OUR EXPERTS ON CURRENT EVENTS, SCIENCE, THE ENVIRONMENT AND CITIZEN INITIATIVES espacepouurlavie.ca/blogue/en



A SCHOOL NEWSLETTER



SOCIAL MEDIA TO HELP YOU STAY IN TOUCH



MONTREAL SPACE FOR LIFE

Our teams have concocted a fabulous line-up of educational activities for you and your class. We're delighted to be able to offer you such a wide choice of activities, easily accessible at montrealspaceforlife.ca.

You'll be able to gather the information you need, answer your students' questions, get ready for a school outing or even plan a family outing!

The Montréal Space for Life mission of connecting humankind with nature begins with sharing this content - it's all yours!

DON'T MISS THESE GREAT ACTIVITIES!

Biodôme

TROPICAL ADVENTURE

(page 8)

Preschool and elementary cycle one

CAPY'S BIG DAY

Puppet show

Capy's Big Day is a fun puppet show for young audiences created specially for the Biodôme, featuring animals from the tropical rainforest.

"BEAKS AND BANDAIDS" RESCUE CENTRE

Discovery area

Our younger visitors will enjoy this rescue centre, where they can pretend to be apprentice veterinarians and prepare food for the animals. They can also dress up as animals and burn off some energy on a play structure.

EDUCATIONAL EXPEDITIONS

(page 11, 14 and 19)

Activity - All cycles

These are three-part workshops led by a nature interpreter: an introduction, a supervised exploration of one ecosystem and a wrap-up activity. You can finish with a self-guided tour of the other ecosystems and exhibition spaces.

Insectarium

WHAT'S THAT BUG?

(page 11)

Activity - Elementary cycle one

Are you observant? If so, then you have everything you need to become an expert in classifying different "bugs" and recognizing which ones are insects.

BUG BITES

BUTTERFLIES GO FREE

(page 8)

Activity - All cycles

Visit a greenhouse full of tropical butterflies and moths to learn about some of the behaviour of these fascinating insects. These short presentations are sure to catch your students' attention and spark their curiosity.

FOR HALLOWEEN

TRICKY SPIDERS

(page 9)

Activity - All cycles

Spiders are great hunters with lots of tempting ways. Just try to resist their charms...

Botanical Garden

FOR HALLOWEEN



NEW!

POUAH! BÉBÉ-SORCIÈRE

(page 9)

Storytelling time - Preschool and elementary cycle one and grade 3 (ages 4-8)

Come learn how baby witches and baby pumpkins are different and alike, in our all-new storytelling session. IN FRENCH ONLY.

TREES UP CLOSE

(page 12)

Activity - Elementary cycle one

Also offered for reception classes and groups with students with learning difficulties or mild intellectual disabilities

Here, students will learn all about trees, their needs and the important role they play for animals. Magnifying glasses in hand, the budding naturalists will identify, observe and discover different structures of deciduous and coniferous trees. A great way to make learning fun!

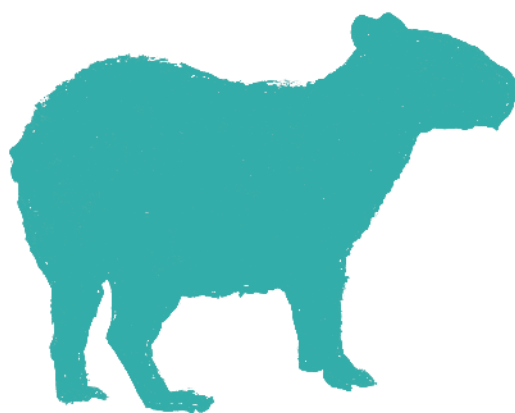
GRAINES • SEEDS • SEMILLAS • 种子

(page 12)

Activity - Elementary cycle one

This workshop offers a look at seeds from near and far. Take a trip around the world to find out where the seeds we eat come from. Examine a mung bean under a microscope for a close-up look at its tiny parts.

The activity continues with a visit to the Tropical Food Plants greenhouse. Cocoa and coffee beans and coconuts have one thing in common - they're absolutely delicious seeds! Have fun looking for the plants that produce them.



Rio Tinto Alcan Planetarium

NEW!

EDGE OF DARKNESS

(page 13)

Show - Elementary cycles 1, 2 and 3 and Secondary

In recent years, numerous space missions have studied little-known objects in the solar system. The Rosetta European space probe, for instance, that gave us a close-up look at comet 67P/Chury, and the New Horizons probe, which flew past Pluto and its moon, Charon. What scientific information have astronomers gained from these missions? *Edge of Darkness* is a tribute to recent space exploration and a call to continue these adventures.

NEW!

EXO

(page 21)

Show - Elementary cycles 1, 2 and 3 and Secondary

Is there life elsewhere in the Universe? If we do find new civilizations out there, should we try to contact them? Scientific research into exobiology is flourishing, and thousands of planets outside our solar system are being located almost daily. *EXO* celebrates the uniqueness of life and consciousness in the Universe.

NEW!

SPACE NEXT

(page 21)

Show - Elementary cycles 1, 2 and 3 and Secondary

Space Next offers an exciting look at the scientific advances that have led to today's technologies making it possible to develop private-sector and national space exploration programs. This introduction to some of the ideas that are inspiring new generations of explorers, scientists and dreamers takes audiences off to new horizons and invites them to imagine life reaching out into the solar system and the cosmos.

NEW!

KYMA, POWER OF WAVES

(page 18)

Show - Elementary cycles 1, 2 and 3 and Secondary

Kyma, Power of Waves carries audiences off in an allegorical, 360° exploration of how waves are everywhere around us, in our Universe and our daily lives. From music to light, from the tiniest particular to immense galaxies, *Kyma* invites you to dive into the mysterious world of waves in a stupendous immersive show featuring artists, musicians and acrobats.



Biodôme

TROPICAL ADVENTURE

Also offered for elementary cycle one

CAPY'S BIG DAY

Puppet show

Capy's Big Day is a fun puppet show for young audiences created specially for the Biodôme, featuring animals from the Tropical Rainforest. Now that he's grown up, Capy, the capybara, has headed off to conquer a new territory and form a new group. He proclaims himself king! But since he's still not very big, he starts eating everything in sight to get stronger. Will he be big enough to convince the animals in the forest to believe in him? Children are sure to enjoy Capy's new adventures.

Length: 20 minutes
Capacity: 130 people
Dates: January 9 to February 2
Schedule: Every Thursday, 11 a.m.

RESERVATIONS REQUIRED

"BEAKS AND BANDAIDS" RESCUE CENTRE

Discovery area

Our younger visitors will enjoy this rescue centre, where they can pretend to be apprentice veterinarians and prepare food for the animals. They can also dress up as animals from the Biodôme and burn off some energy on a play structure.

Length: 30 minutes
Dates: January 9 to February 2
Schedule: 9 a.m. to 2:30 p.m.

[NO RESERVATIONS REQUIRED]



Insectarium

POP CAPSULES

Also offered for elementary and secondary

Watch closely - some surprising characters who are passionate about insects will be popping up in the exhibition to share some well-guarded secrets with you! IN FRENCH ONLY

Length: 10 minutes
Location: *We Are the Insects* exhibition
Dates: Sept. 5 to January 1
Schedule: 2 p.m.

[NO RESERVATIONS REQUIRED]

SUPER INSECTS ON TOUR

Also offered for elementary and secondary

Come meet some insect superheroes and give them a friendly "leg shake"!

Length: 20 minutes
Location: *We Are the Insects* exhibition
Dates: September 5 to October 5 & Nov. 1 to to January 1
Schedule: 1:30 & 4 p.m.

[NO RESERVATIONS REQUIRED]

NATURALLY WELL MADE

Also offered for elementary and secondary

There's no doubt about it: Insects are marvellously designed machines, perfectly adapted to their environment. Come admire some of the tricks that make them inspiring models of efficiency we could learn from!

Length: 15 minutes
Location: Patte-à-patte room
Dates: September 5 to October 5
Schedule: 2:30 p.m.

[NO RESERVATIONS REQUIRED]

INSECTS IN WINTERTIME

Also offered for elementary and secondary

How do insects manage to survive our cold winters? Learn about their many tricks!

Length: 15 minutes
Location: Patte-à-patte room
Dates: November 1 to January 1
Schedule: 2:30 p.m.

[NO RESERVATIONS REQUIRED]



BUG BITES BUTTERFLIES GO FREE

Also offered for elementary and secondary

Visit a greenhouse full of tropical butterflies and moths to learn about some of the behaviour of these fascinating insects. These short presentations are sure to catch your students' attention and spark their curiosity.

Length: 10 minutes
Location: Main Exhibition Greenhouse at the Botanical Garden
Dates: February 22 to April 29
Schedule: 10 & 11 a.m., noon & 1, 2, 3 & 4 p.m.

[NO RESERVATIONS REQUIRED]

FOR HALLOWEEN



TRICKY SPIDERS

Also offered for elementary and secondary

Spiders are great hunters with lots of tempting ways. Just try to resist their charms...

Length: 15 minutes
Location: Patte-à-patte room
Dates: October 6 to 31
Schedule: 2:30 p.m.

[NO RESERVATIONS REQUIRED]

HALLOWEEN STARS

Also offered for elementary and secondary

Go ahead and touch them! Spiders and their cousins are waiting for you to give them a friendly "leg shake." You're sure to find them very docile and totally irresistible.

Length: 20 minutes
Location: *We Are the Insects* exhibition
Dates: October 6 to 31
Schedule: 10 a.m., 1:30 & 4 p.m.

[NO RESERVATIONS REQUIRED]

POP CAPSULES

Also offered for elementary and secondary

Ready for a surprising encounter? Our famous adventurer, back for Halloween, is looking forward to sharing his amazing discoveries all about spiders with you. **IN FRENCH ONLY**

Length: 10 minutes
Location: *We Are the Insects* exhibition
Dates: October 6 to 31
Schedule: 11:30 a.m. & 2 p.m.

[NO RESERVATIONS REQUIRED]

Botanical Garden

FOR HALLOWEEN



NEW!

POUAH! BÉBÉ-SORCIÈRE

Storytelling time - Also offered for elementary cycle one and grade 3 (ages 4-8)

Baby witches in Monsterland are lucky. They not only get bottles of toad spit, but take their baths in snake eye juice. YUCK! And what about baby squash? Are they like baby witches? Do they have warts? Come learn how baby witches and baby pumpkins are different and alike, in our all-new storytelling session. Text by Lucie Papineau, illustrations by Steve Beshwaty. **IN FRENCH ONLY**

Offered in co-operation with the Friends of the Montréal Botanical Garden

Length: 30 minutes
Location: Auditorium
Dates: October 6 to 31
Schedule: 1 to 4 shows a day; see our website for times

GROUPS: RESERVATIONS REQUIRED

GREAT PUMPKIN BALL EXHIBITION

Also offered for elementary

Your class can visit the exhibition and enter the pumpkin-decorating contest. Guaranteed fun and cash prizes to be won. Contest rules available on the Garden website.

Location: Main Exhibition Greenhouse
Dates: October 6 to 31
Schedule: 9 a.m. to 9 p.m.

Contest deadline: October 15, 7 p.m.

[NO RESERVATIONS REQUIRED]



ESMERALDA, THE FRIENDLY WITCH

Also offered for Elementary cycle one and grade 3 (ages 4-8)

Esmeralda, our friendly witch, is a fabulous gardener! Her vegetables are astonishing... almost magical! But it doesn't take witchcraft to grow two-legged carrots, blue corn and square melons. You just need a bit of imagination! Come meet Esmeralda and she'll tell you herself.

Location: Main Exhibition Greenhouse
Dates: October 6 to 31
Schedule: 9:30 a.m. to 8:30 p.m.

[NO RESERVATIONS REQUIRED]



PRESCHOOL — Daycare & Kindergarten

USING ALL YOUR SENSES TO DISCOVER PLANTS

Kindergarten, ages 5-6 – Also offered for students with intellectual disabilities and reception classes

Have fun using all your senses to learn about plants: their spectacular looks, their heady scents, their surprising textures, their exquisite tastes and even their intriguing sounds! The activity starts with a fun look at the senses and the plant world and continues with a tour of the greenhouses, where you'll see a trunk whose base is bigger than an elephant's foot, leaves that are spotted like a cheetah... an eyeeful of shapes and colours!

Length: 75 minutes

Capacity: 2 classes

Location: Multipurpose rooms and greenhouses

Dates: March 13 to June 8

Schedule: 9:30 a.m. & 12:30 p.m.



Frédéric Back Tree Pavilion

Most activities take place indoors. For some activities, however, we may take the students outdoors into the Arboretum. So it's important for the children to be dressed appropriately for the weather (boots, raingear, gloves, etc.). That way everyone is sure to enjoy the outing.

COMBINE an educational activity of your choice with the complementary *Our Friends, the Birds* activity. Ask when you reserve.

OUR FRIENDS, THE BIRDS

*Preschool, kindergarten, ages 4-5 only
Also offered for elementary cycles one and two, reception classes and groups with students with learning difficulties or mild intellectual disabilities*

Your students will head off in teams in search of bird beaks and feet and to discover some surprising adaptations, play birdsong bingo and learn to recognize a black-capped chickadee's call. They'll have a great time with all these observation, demonstration and hands-on activities that will turn them into budding ornithologists!

Length: 45 minutes

Capacity: 1 class

Location: Frédéric Back Tree Pavilion

Dates: October 4 to 27
& May 16 to June 8

Schedule: 9:30 & 10:30 a.m.
& 12:30 p.m.,
Wednesday to Friday

Rio Tinto Alcan Planetarium

This year the Rio Tinto Alcan Planetarium is offering educational activities designed specifically for elementary and secondary students. We strongly recommend that younger students wait until they're a bit older before coming for their first activity.



Biodôme

TROPICAL ADVENTURE CAPY'S BIG DAY and "BEAKS AND BANDAIDS" RESCUE CENTRE

See descriptions, page 8
Dates: January 9 to February 2

ANIMAL CHALLENGE

Also offered for elementary cycles two and three and secondary

For groups interested in a self-guided observation activity. The students will have to identify as many animal and plant species appearing in the identification guide as they can. Nature interpreters who know all the secrets to finding even the best-hidden animals will be posted along the paths to help them out.

Length: 90 minutes
Capacity: up to 10 classes
Dates: October 10 to December 8
Schedule: 9 a.m. to 1 p.m.

NATURALIA

Touching a beaver's fur, getting a close-up look at an alligator's teeth, testing your sense of smell – the Naturalia room is just full of things to discover! Your students will break up into smaller groups and carry out different activities along with some adult help to find out how animals are adapted to their environment. Another great way to learn about biodiversity!

Length: 90 minutes
Capacity: Between 15 and 60 students, or 1 or 2 classes from the **same** cycle
Dates: October 10 to December 8
Schedule: 9:45 a.m.



EDUCATIONAL EXPEDITIONS

These are three-part workshops led by a nature interpreter: an introduction, a supervised exploration of one ecosystem and a wrap-up activity. You can finish with a self-guided tour of the other ecosystems and exhibition spaces.

Length: 90 minutes
Capacity: 1 class (minimum 15 students)
Dates: October 10 to December 8
Schedule: 9:45 a.m. & 12:15 p.m.

There are four expeditions available for elementary cycle one:

Tropical Rainforest A PHOTO SAFARI IN THE TROPICAL RAINFOREST

Photography is a wonderful pastime, especially in the company of a photographer/explorer in the Biodôme's Tropical Rainforest, where an astonishing diversity of animals can be found! Your students will also learn about the characteristics of the main groups of animals.

Laurentian Maple Forest TRACKING ANIMALS

Your students will join a nature enthusiast and track some animals! The young explorers will follow the tracks and other clues all the way to the Laurentian Maple Forest.

Gulf of St. Lawrence ANCHORS AWEIGH ON THE ST. LAWRENCE

The captain and his crew will set off to discover the many worlds in the Gulf of St. Lawrence. His young sailors will observe the kittiwakes, anemones and sea stars, along with many kinds of saltwater fish.

Sub-Polar Regions PROFESSOR PENGUIN AND A JOURNEY TO THE POLES

Professor Penguin will take your students on an unusual trip to the Labrador coast and sub-Antarctic islands, to find the parents of the baby penguins and auks and learn how the Biodôme staff cares for them. They'll also play some games to introduce them to the Inuit culture and the true nature of the sub-polar regions.

Insectarium

WHAT'S THAT BUG?

Are you observant? If so, then you have everything you need to become an expert in classifying different "bugs" and recognizing which ones are insects. But pay close attention! Just like young humans, young insects can play tricks on you!

Length: 45 minutes
Location: Patte-à-patte room
Dates: September 18 to 29 & Nov. 1 to December 15
Schedule: 9:15 & 10:30 a.m.

POP CAPSULES

See description, page 8
Dates: September 5 to January 1

SUPER INSECTS ON TOUR

See description, page 8
Dates: September 5 to October 5 & November 1 to January 1

NATURALLY WELL MADE

See description, page 8
Dates: September 5 to October 5

INSECTS IN WINTERTIME

See description, page 8
Dates: November 1 to January 1

BUG BITES BUTTERFLIES GO FREE

See description, page 8
Dates: February 22 to April 29

FOR HALLOWEEN



Don't miss our captivating presentations on spiders:

TRICKY SPIDERS HALLOWEEN STARS POP CAPSULE

See description, page 9
Dates: October 6 to 31

Botanical Garden

FOR HALLOWEEN 

NEW!
POUAH! BÉBÉ-SORCIÈRE
GREAT PUMPKIN BALL EXHIBITION
ESMERALDA, THE FRIENDLY
WITCH

See descriptions, page 9
 Dates: October 6 to 31

THE VEGETABLE GARDEN REVISITED

Offered for grade 1 and for students with intellectual disabilities

In this workshop, students will get a close-up look at a plant from the vegetable garden.

As they examine vegetable plants, they'll discover that broccoli is a flower and that they eat roots, themselves! A look at composting and micro-shoots will help them become urban gardeners. A guided tour of the greenhouses rounds out this activity. The secrets of vanilla, chocolate, chewing gum and many other foods will be revealed. Discover some roots - in the air - and a bark that's used to flavour pastries! All are certain to pique children's curiosity.

Length: 90 minutes
 Capacity: 2 classes
 Location: Multipurpose rooms
 Dates: March 13 to June 8
 Schedule: 9:30 a.m. & 12:30 p.m.



GRAINES • SEEDS • SEMILLAS • 种子

Also offered for reception classes

This workshop offers a look at seeds from near and far. Take a trip around the world to find out where the seeds we eat come from. Examine a mung bean under a microscope for a close-up look at its tiny parts.

The activity continues with a visit to the Tropical Food Plants greenhouse. Cocoa and coffee beans and coconuts have one thing in common - they're absolutely delicious seeds! Have fun looking for the plants that produce them.

Length: 90 minutes
 Capacity: 2 classes
 Location: Multipurpose rooms and greenhouses
 Dates: March 13 to June 8
 Schedule: 9:30 a.m. & 12:30 p.m.

Frédéric Back Tree Pavilion

Most activities take place indoors. For some activities, however, we may take the students outdoors into the Arboretum. So it's important for the children to be dressed appropriately for the weather (boots, raingear, gloves, etc.). That way everyone is sure to enjoy the outing.

COMBINE an educational activity of your choice with the complementary *Our Friends, the Birds* activity. Ask when you reserve.

TREES UP CLOSE

Also offered for reception classes and groups with students with learning difficulties or mild intellectual disabilities

Here, students will learn all about trees, their needs and the important role they play for animals. Magnifying glasses in hand, the budding naturalists will identify, observe and discover different structures of deciduous and coniferous trees. A great way to make learning fun!

Length: 60 minutes
 Capacity: 1 class
 Location: Frédéric Back Tree Pavilion and Arboretum
 Dates: October 4 to 27 & May 16 to June 8
 Schedule: 9:30 & 10:30 a.m. & 12:30 p.m.,
 Wednesday to Friday

Activity sheet available on our website: espacepourelavie.ca/en/complementary-activities

OUR FRIENDS, THE BIRDS

See description, page 10
 Dates: October 4 to 27 & May 16 to June 8
 Length: 60 minutes



Rio Tinto Alcan Planetarium

NEW!

EDGE OF DARKNESS

Show

Also offered for elementary cycles two and three and secondary

In recent years, numerous space missions have studied little-known objects in the solar system. The Rosetta European space probe, for instance, that gave us a close-up look at comet 67P/Chury, and the New Horizons probe, which flew past Pluto and its moon, Charon. What scientific information have astronomers gained from these missions? *Edge of Darkness* is a tribute to recent space exploration and a call to continue these adventures.

Length: 25 minutes
 Location: Chaos Theatre
 Dates: September 5 to April 29
 Schedule: Contact our Group reservations department at 514 868-3000

ASTEROID: MISSION EXTREME

Show

Also offered for elementary cycles two and three and secondary

Ready for an extreme mission? Are you up to a challenge? It's both the ultimate risk and a fantastic opportunity. Asteroids are threatening to collide with the Earth in a cataclysmic event, and at the same time they could be used to transport us across the solar system.

Length: 25 minutes
 Location: Chaos Theatre
 Dates: September 5 to October 29
 Schedule: Contact our Group reservations department at 514 868-3000

NEW!

KYMA, POWER OF WAVES

Show

See description, page 18

Dates: September 5 to April 29

NEW!

SPACE NEXT

Show

See description, page 21

Dates: October 30 to June 21

NEW!

EXO

Show

See description, page 21

Dates: October 30 to June 21

ASTRO CAPSULES

See description, page 18

Dates: September 5 to May 31

EXO: OUR SEARCH FOR LIFE IN THE UNIVERSE

Exhibition

See description, page 21

Dates: September 5 to June 21

ONE DAY... ON MARS

Show

See description, page 23

Dates: September 5 to October 29



ELEMENTARY CYCLE TWO – Grades 3 & 4

Biodôme

ANIMAL CHALLENGE

See description, page 11
Dates: October 10 to December 8



EDUCATIONAL EXPEDITIONS

These are three-part workshops led by a nature interpreter: an introduction, a supervised exploration of one ecosystem and a wrap-up activity. You can finish with a self-guided tour of the other ecosystems and exhibition spaces.

Length: 90 minutes
Capacity: 1 class
(minimum of 15 students)
Dates: October 10 to December 8
Schedule: 9:45 a.m. & 12:15 p.m.

There are **four expeditions** available for elementary cycle two:

Tropical Rainforest

LIFE IN MY TRIBE

Thanks to the shaman's powers, students are magically transformed into young Arawete Indians of Amazonia. Their mission is to explore the tropical forest and discover the best place to establish a new village for the tribe. It's a chance to understand not only the diversity of the Amazonian tropical rainforest, but also the close links between this natural environment and the cultural characteristics of the people who live there.

Laurentian Maple Forest

IN TUNE WITH THE SEASONS

Also offered for elementary cycle three
Spring, summer, fall, winter... As the seasons roll by, the forest awakens, flowers, bursts into blazing colour and sinks back into slumber.

NATURALIA

Touching a beaver's fur, getting a close-up look at an alligator's teeth, testing your sense of smell – the Naturalia room is just full of things to discover! Your students will break up into smaller groups and carry out different activities along with some adult help to find out how animals are adapted to their environment. Another great way to learn about biodiversity!

Length: 90 minutes
Capacity: Between 15 and 60 students, or 1 or 2 classes from the **same** cycle
Dates: October 10 to December 8
Schedule: 9:45 a.m.

As they explore the forest at the Biodôme, students will discover the close links between plants, animals and their environment.

Gulf of St. Lawrence

A SEA OF DISCOVERIES

Also offered for elementary cycle three
Head off in search of some fascinating marine species, in spectacular surroundings representing the Gulf of St. Lawrence. Through an exploration activity, your students will observe this rich habitat and learn about the importance of preserving this precious biodiversity. They will come up with solutions to the environmental problems facing this region, based on an ecocitizen approach. They will then be invited to pursue their efforts back at school.

Sub-Polar Regions

POLAR MISSIONS

Also offered for elementary cycle three
A scientist will lead students on two research missions. First they'll travel to a frozen island in Antarctica, where they'll learn about the species that live there, their food sources and their predators. Then they'll head North, to study the species on an island located off the coast of Labrador in the Canadian Sub-Arctic. Armed with their discoveries, they'll look at the possible impact of climate change on the biodiversity they've seen.

Insectarium

HEROES YOU CAN COUNT ON!

Insects have an invitation for you: join their team of Earth artisans! It's an attractive offer, because they are already doing so much for us! Come learn about the many roles of these heroes of nature, and how you can help them do their jobs.

Length: 45 minutes
Location: Patte-à-patte room
Dates: September 18 to 29 & November 1 to December 15
Schedule: 9:15 & 10:30 a.m.

POP CAPSULES

See description, page 8
Dates: September 5 to January 1

SUPER INSECTS ON TOUR

See description, page 8
Dates: September 5 to October 5 & November 1 to January 1

NATURALLY WELL MADE

See description, page 8
Dates: September 5 to October 5

INSECTS IN WINTERTIME

See description, page 8
Dates: November 1 to January 1

BUG BITES

BUTTERFLIES GO FREE

See description, page 8
Dates: February 22 to April 29

FOR HALLOWEEN



Don't miss our captivating presentations on spiders:

TRICKY SPIDERS

HALLOWEEN STARS

POP CAPSULE

See description, page 9
Dates: October 6 to 31



Botanical Garden

FOR HALLOWEEN



NEW!
POUAH! BÉBÉ-SORCIÈRE
GREAT PUMPKIN BALL EXHIBITION
ESMERALDA, THE FRIENDLY
WITCH

See descriptions, page 9
 Dates: October 6 to 31

INSECT-EATING PLANTS

Insect-eating plants have developed fascinating ways of adapting. Handling, observing and comparing different plants will allow students to understand how these adaptations work. The educator will make them aware of the importance of protecting the habitats of these vulnerable plants. The activity includes a guided tour of the greenhouses. Certain kinds of plants, such as carnivorous plants, have developed strategies to adapt to their environment... how's that for bioengineering!

Length: 90 minutes
 Capacity: 2 classes
 Location: Multipurpose rooms and greenhouses
 Dates: March 13 to June 8
 Schedule: 9:30 a.m. & 12:30 p.m.



First Nations Garden

INTRODUCTION TO THE FIRST NATIONS



Enjoy a unique experience as you're carried off to the "land of peace" in the First Nations Garden. Gatherings are a central part of Native culture. First Nations peoples come together to celebrate bountiful harvests, births and reunions after long winters spent in the forest. Come celebrate in the heart of nature as you learn about past and present traditions among the First Nations!

Length: 60 minutes
 Capacity: 1 class
 Location: First Nations Garden
 Dates: October 4 to 27
 & May 16 to June 8
 Schedule: 9:30 a.m. & 12:30 p.m.

COMBINED FORMAT

THE GREAT GATHERING

Combine
 INTRODUCTION TO THE FIRST NATIONS
 and
 TREE QUIZ



The First Nations have always maintained close bonds with the forest. The Frédéric Back Tree Pavilion and the First Nations Garden team up to celebrate these natural relationships. Your day of discovery will include two activities: *Introduction to the First Nations* and the *Tree Quiz*. Both activities relate to the Science and Technology and Social Sciences programs. A fascinating day of science and culture combined with nature.

Length: 4 hours
 Capacity: 2 classes
 Location: First Nations Garden, Arboretum and Frédéric Back Tree Pavilion
 Dates: October 4 to 27
 & May 16 to June 8
 Schedule: 9:30 a.m. to 1:30 p.m.,
 Wednesday to Friday

Frédéric Back Tree Pavilion

Most activities take place indoors. For some activities, however, we may take the students outdoors into the Arboretum. So it's important for the children to be dressed appropriately for the weather (boots, raingear, gloves, etc.). That way everyone is sure to enjoy the outing.

COMBINE an educational activity of your choice with the complementary *Our Friends, the Birds* activity. Ask when you reserve.

TREE QUIZ

A game, puzzles and a race against the clock. A perfect opportunity to test what you know about trees. Which tree grows fastest? How can a ring help you tell the age of a tree? Can you think of an object made out of wood whose name begins with "Y"? Teamwork is the key to success!

Length: 60 minutes
 Capacity: 1 class
 Location: Frédéric Back Tree Pavilion
 Dates: October 4 to 27
 & May 16 to June 8
 Schedule: 9:30 & 10:30 a.m.
 & 12:30 p.m.,
 Wednesday to Friday

OUR FRIENDS, THE BIRDS

See description, page 10
 Dates: October 4 to 27 & May 16 to June 8
 Length: 60 minutes

TREE RALLY

See description, page 20
 Dates: October 4 to 27 & May 16 to June 8



This symbol indicates an outdoor activity.

Rio Tinto Alcan Planetarium

NEW!

KYMA, POWER OF WAVES

Show

Also offered for elementary cycles one and three and secondary

Kyma, Power of Waves carries audiences off in an allegorical, 360° exploration of how waves are everywhere around us, in our Universe and our daily lives. From music to light, from the tiniest particular to immense galaxies, *Kyma* invites you to dive into the mysterious world of waves in a stupendous immersive show featuring artists, musicians and acrobats.

Length: 40 minutes

Location: Milky Way Theatre

Dates: September 5 to April 29

Schedule: Contact our Group reservations department at 514 868-3000

Writer and Director: Philippe Baylaucq
Original score: Robert Marcel Lepage
Production: National Film Board of Canada (NFB/René Chénier)

GET TO KNOW THE UNIVERSE

Combined guided activity and show

Also offered for elementary cycle three

Get the most out of your visit to the Rio Tinto Alcan Planetarium by exploring the planets in the solar system as part of a 45-minute interactive workshop and then watching a show in the Milky Way Theatre.

Length: 1 hour 45 minutes (including a workshop and a show)

Capacity: 1 to 3 classes maximum, depending on availability

Location: Workshop and show in the Milky Way Theatre

Dates: Wednesdays and Thursdays from October 11 to May 31

Schedule: 11:30 a.m.

ASTRO CAPSULES

Guided activity

Also offered for elementary cycles one and three and secondary

Come explore the solar system with a scientific interpreter who is passionate about astronomy. Discover the planets' characteristics, the phenomenal sizes of celestial objects and the astronomical distances between them! And why not take the opportunity to cook a little? Take part in an activity aiming to concoct... a comet recipe! Three different activities are offered in rotation all day long.

Length: 10 minutes

Location: The bleachers in the *EXO* exhibition

Dates: September 5 to May 31

Schedule: Contact our Group reservations department at 514 868-3000

NEW!

EDGE OF DARKNESS

Show

See description, page 13

Dates: September 5 to April 29

NEW!

SPACE NEXT

Show

See description, page 21

Dates: October 30 to June 21

NEW!

EXO

Show

See description, page 21

Dates: October 30 to June 21

EXO: OUR SEARCH FOR LIFE IN THE UNIVERSE

Exhibition

See description, page 21

Dates: September 5 to June 21

ASTEROID: MISSION EXTREME

Show

See description, page 13

Dates: September 5 to October 29

ONE DAY... ON MARS

Show

See description, page 23

Dates: September 5 to October 29



ELEMENTARY CYCLE THREE — Grades 5 & 6

Biodôme

EDUCATIONAL EXPEDITIONS

These are three-part workshops led by a nature interpreter: an introduction, a supervised exploration of one ecosystem and a wrap-up activity. You can finish with a self-guided tour of the other ecosystems and exhibition spaces.

Length: 90 minutes

Capacity: 1 class

(minimum of 15 students)

Dates: October 10 to December 8

Schedule: 9:45 a.m. & 12:15 p.m.

Four expeditions are offered for elementary cycle three:

Tropical Rainforest

AMAZONIAN EXPEDITION

Join our biologist as he explores biodiversity in the Amazon. He needs an enthusiastic team to help him gather as much information as possible, collect scientific data and conduct a survey of the endangered and threatened species in the Tropical Rainforest of the Americas.

Laurentian Maple Forest

IN TUNE WITH THE SEASONS

See description, page 14

Gulf of St. Lawrence

A SEA OF DISCOVERIES

See description, page 14

Sub-Polar Regions

POLAR MISSIONS

See description, page 14

NATURALIA

Touching a beaver's fur, getting a close-up look at an alligator's teeth, testing your sense of smell – the Naturalia room is just full of things to discover! Your students will break up into smaller groups and carry out different activities along with some adult help to find out how animals are adapted to their environment. Another great way to learn about biodiversity!

Length: 90 minutes

Capacity: Between 15 and 60 students, or 1 or 2 classes from the **same** cycle

Dates: October 10 to December 8

Schedule: 9:45 a.m.

ANIMAL CHALLENGE

Also offered for elementary cycles one and two and secondary

For groups interested in a self-guided observation activity. The students will have to identify as many animal and plant species appearing in the identification guide as they can. Nature interpreters who know all the secrets to finding even the best-hidden animals will be posted along the paths to help them out.

Length: 90 minutes

Capacity: up to 10 classes

Dates: October 10 to December 8

Schedule: 9 a.m. to 1 p.m.



Insectarium

1000 PLACES ON EARTH

Insects live everywhere! On land, in and on the water and even in the most extreme conditions on Earth. Come on a trip around the world and see how they have adapted to all kinds of environments.

Length: 45 minutes

Location: Patte-à-patte room

Dates: September 18 to 29 &

November 1 to December 15

Schedule: 9:15 & 10:30 a.m.

POP CAPSULES

See description, page 8

Dates: September 5 to January 1

SUPER INSECTS ON TOUR

See description, page 8

Dates: September 5 to October 5

& November 1 to January 1

NATURALLY WELL MADE

See description, page 8

Dates: September 5 to October 5

INSECTS IN WINTERTIME

See description, page 8

Dates: November 1 to January 1

BUG BITES

BUTTERFLIES GO FREE

See description, page 8

Dates: February 22 to April 29

FOR HALLOWEEN



Don't miss our captivating presentations on spiders:

TRICKY SPIDERS

HALLOWEEN STARS

POP CAPSULE

See description, page 9

Dates: October 6 to 31



ELEMENTARY CYCLE THREE — Grades 5 & 6

Botanical Garden

FOR HALLOWEEN



GREAT PUMPKIN BALL EXHIBITION

See description, page 9

Dates: October 6 to 31

EXTREME COMBAT: LADYBUGS VS. APHIDS

Your students will act as research assistants and help out a scientific team as they conduct a biological control research project using insects. They'll observe insects to find out who will win the battle between ladybugs and aphids. They'll get some hands-on experience and learn to record scientific data.

Length: 90 minutes

Capacity: 2 classes

Location: Multipurpose rooms and greenhouses

Dates: March 13 to June 8

Schedule: 9:30 a.m. & 12:30 p.m.

Frédéric Back Tree Pavilion

Most activities take place indoors. For some activities, however, we may take the students outdoors into the Arboretum. So it's important for the children to be dressed appropriately for the weather (boots, raingear, gloves, etc.). That way everyone is sure to enjoy the outing.

COMBINE the *Tree Rally* and *Tree Quiz* activities. Ask when you reserve.

TREE RALLY

Also offered for elementary cycle two

On your marks, get set, go! It's a hunt through the Botanical Garden's tree collection. In the Arboretum, students will hunt for puzzles hidden in the trees and try to solve them. This race against the clock will let them run around as they learn about trees and sharpen their observation skills.

Length: 60 minutes

Capacity: 2 classes

Location: Arboretum

Dates: October 4 to 27
& May 16 to June 8

Schedule: 9:30 & 10:30 a.m.

& 12:30 p.m.,
Wednesday to Friday



TREE QUIZ

A game, puzzles and a race against the clock. A perfect opportunity to test what you know about trees. Which tree grows fastest? How can a ring help you tell the age of a tree? Can you think of an object made out of wood whose name begins with "Y"? Teamwork is the key to success!

Length: 60 minutes

Capacity: 1 class

Location: Frédéric Back Tree Pavilion

Dates: October 4 to 27
& May 16 to June 8

Schedule: 9:30 & 10:30 a.m.

& 12:30 p.m.,
Wednesday to Friday



This symbol indicates an outdoor activity.

ELEMENTARY CYCLE THREE — Grades 5 & 6

Rio Tinto Alcan Planetarium

NEW!

SPACE NEXT

Show

Also offered for elementary cycles one and two and secondary

Space Next offers an exciting look at the scientific advances that have led to today's technologies making it possible to develop private-sector and national space exploration programs. This introduction to some of the ideas that are inspiring new generations of explorers, scientists and dreamers takes audiences off to new horizons and invites them to imagine life reaching out into the solar system and the cosmos.

Length: 25 minutes
Location: Chaos Theatre
Dates: October 30 to June 21
Schedule: Contact our Group reservations department at 514 868-3000

NEW!

EXO

Show

Also offered for elementary cycles one and two and secondary

Is there life elsewhere in the Universe? If we do find new civilizations out there, should we try to contact them? Scientific research into exobiology is flourishing, and thousands of planets outside our solar system are being located almost daily. EXO celebrates the uniqueness of life and consciousness in the Universe.

Length: 40 minutes
Location: Milky Way Theatre
Dates: October 30 to June 21
Schedule: Contact our Group reservations department at 514 868-3000

NEW!

EDGE OF DARKNESS

Show

See description, page 13
Dates: September 5 to April 29

NEW!

KYMA, POWER OF WAVES

Show

See description, page 18
Dates: September 5 to April 29

EXO: OUR SEARCH FOR LIFE IN THE UNIVERSE

Exhibition • Self-guided tour

Also offered for elementary cycles one and two and secondary

How did life appear on Earth? Does life exist elsewhere in the Universe? The interactive digital exhibition EXO: Our Search for Life in the Universe invites you on an exciting journey through spectacular images and activities, projections and multimedia games!

Length: 20 to 45 minutes
Dates: September 5 to June 21
Schedule: 9 a.m. to 5 p.m.

[NO RESERVATIONS REQUIRED]

ONE DAY... ON MARS

Show

See description, page 23
Dates: September 5 to October 29

ASTEROID: MISSION EXTREME

Show

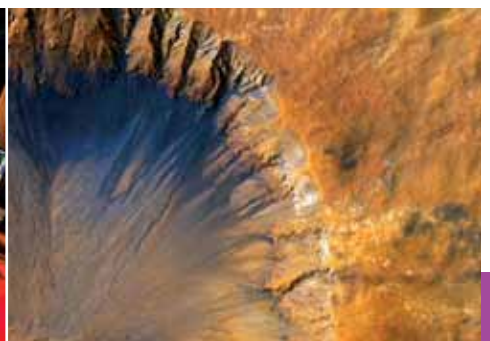
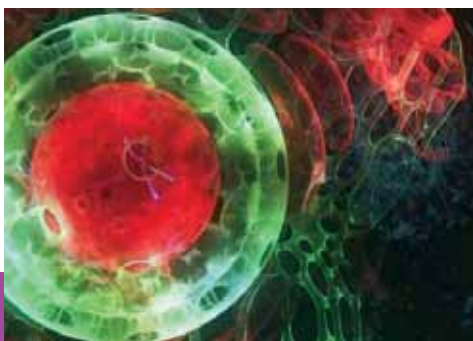
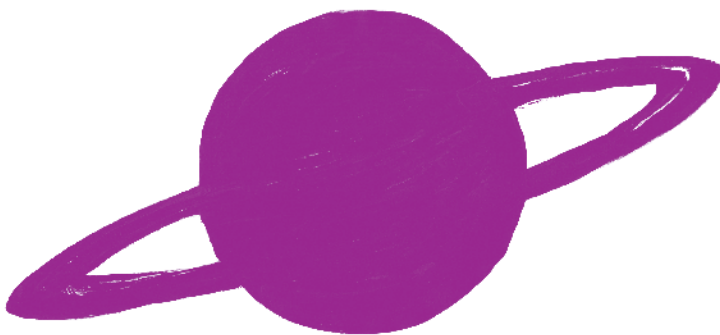
See description, page 13
Dates: September 5 to October 29

ASTRO CAPSULES

See description, page 18
Dates: September 5 to May 31

GET TO KNOW THE UNIVERSE

Combined guided activity and show
See description, page 18
Date: Wednesdays and Thursdays from October 11 to May 31



Biodôme

BEHIND THE SCENES GUIDED TOUR

Secondary cycle two

Here's your chance to see what goes on behind the scenes at the Biodôme, including the filtration and ventilation systems, animal kitchens, breeding basins and all the equipment and facilities that allow us to maintain the ecosystems in our controlled environment. This guided tour is sure to be of particular interest to students fascinated by environmental technology.

Length: 60 minutes
 Capacity: 15 to 19 students per group
 Dates: Sept. 26 to December 15
 Schedule: (up to 2 groups at the same time)
 9:30 & 10:30 a.m., 1:30 & 2:30 p.m.
 Cost: \$66 per group (admission extra)

ANIMAL CHALLENGE

Also offered for elementary cycles

For groups interested in a self-guided observation activity. The students will have to identify as many animal and plant species appearing in the identification guide as they can. Nature interpreters who know all the secrets to finding even the best-hidden animals will be posted along the paths to help them out.

Length: 90 minutes
 Capacity: up to 10 classes
 Dates: October 10 to December 8
 Schedule: 9 a.m. to 1 p.m.

THE FOREST BECKONS ME

Secondary cycle 1

Your students are invited to help preserve local biodiversity by taking part in a wild leek seeding project (target regions: Montérégie, Lanaudière, Lower Laurentians, Outaouais, Eastern Townships).

The program will take place over the course of **two consecutive years**:

Year 1: Spring 2018

You will have access to a series of preparatory activities (herbarium, map, etc.). You will need to reserve two days for them.

Step 1

Between February 1 and March 31

Your students will visit a lab at Montréal Space for Life to determine whether their site* is suitable for growing wild leek. They will attend a workshop/lecture explaining the importance of biodiversity and the different careers they can investigate in the spring, during step 2: planting day in the maple stand.

** Your students will have collected a soil sample from a local sugar maple stand of their choice, the previous fall.*

Step 2

Between May 7 and 25

Sowing wild leek seeds. Your students will play the roles of biologists, forestry engineers, surveyors and reporters.

The Biodôme team will be on hand for both days during the first year.

Year 2: May 2019

You will need to reserve a half day for a field trip to see how the project is progressing. Your students will return to the site where they sowed their wild leek seeds, to examine the results. They will count the number of plants that have sprouted and send their results to the Biodôme. This is a chance for them to contribute to restoring this spring-time plant.

Capacity: a class of 35 students

For information, contact our Group reservations department at 514 868-3000

The closing of the Biodôme in 2018 has no incidence on this activity.

Insectarium

SUPER INSECTS ON TOUR

Also offered for elementary and secondary

Come meet some insect superheroes and give them a friendly "leg shake"!

Length: 20 minutes
 Location: *We Are the Insects* exhibition
 Dates: September 5 to October 5 & Nov. 1 to January 1
 Schedule: 1:30 & 4 p.m.

[NO RESERVATIONS REQUIRED]

POP CAPSULES

See description, page 8

Dates: September 5 to January 1

NATURALLY WELL MADE

See description, page 8

Dates: September 5 to October 5

INSECTS IN WINTERTIME

See description, page 8

Dates: November 1 to January 1

BUG BITES

BUTTERFLIES GO FREE

See description, page 8

Dates: February 22 to April 29

FOR HALLOWEEN



Don't miss our captivating presentations on spiders:

TRICKY SPIDERS HALLOWEEN STARS POP CAPSULE

See description, page 9

Dates: October 6 to 31



Botanical Garden

BIODIVERSITY ON OUR PLATES

Secondary cycle one

Biodiversity is the basis of all food crops. It is essential for maintaining food security and ecosystems and respecting other cultures everywhere. With this activity combining science, geography and language arts, students will learn about the importance of tropical food diversity for humanity.

Length: 90 minutes
 Capacity: 2 classes
 Location: Multipurpose room
 Dates: March 13 to June 8
 Schedule: 9:30 a.m. & 12:30 p.m.

Rio Tinto Alcan Planetary

ONE DAY... ON MARS

Show

Also offered for elementary cycle one, two and three

Was there life on Mars at one time? The red planet has continued to intrigue scientists for over fifty years. While humankind is preparing to land on its arid soil within the next few decades, Mars' rugged landscapes have much to tell us about its history, the presence of water and more recently of clay, a new element that raises hopes of actually finding traces of life there.

Length: 40 minutes
 Location: Milky Way Theater
 Dates: September 5 to October 29
 Schedule: Contact our Group reservations department at 514 868-3000

NEW!

EDGE OF DARKNESS

Show

See description, page 13
 Dates: September 5 to April 29

NEW!

KYMA, POWER OF WAVES

Show

See description, page 18
 Dates: September 5 to April 29

NEW!

SPACE NEXT

Show

See description, page 21
 Dates: October 30 to June 21

NEW!

EXO

Show

See description, page 21
 Dates: October 30 to June 21

EXO: OUR SEARCH FOR LIFE IN THE UNIVERSE

Exhibition

See description, page 21
 Dates: September 5 to June 21

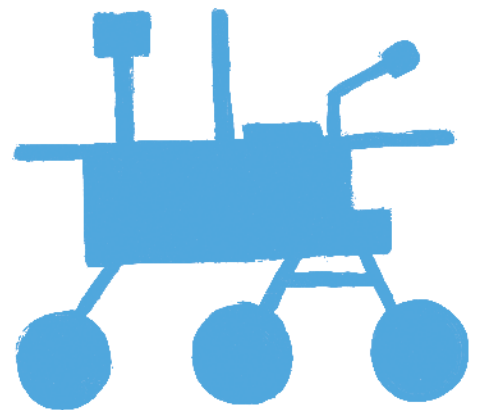
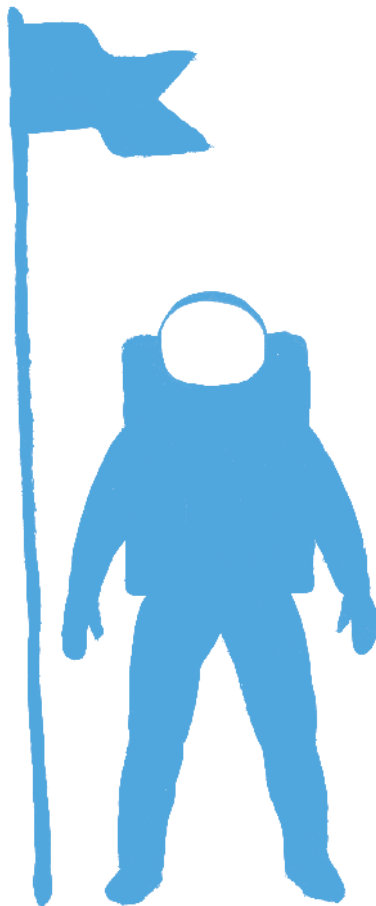
ASTRO CAPSULES

See description, page 18
 Dates: September 5 to May 31

ASTEROID: MISSION EXTREME

Show

See description, page 13
 Dates: September 5 to October 29



SPECIALIZED ACTIVITIES

Biodôme

ADAPTED EDUCATIONAL EXPEDITIONS

Elementary

Our interpretation staff can offer educational expeditions adapted to the needs of your group. Call to reserve their services and for information on the special features of this program.

Length: 90 minutes

Capacity: 1 class

Dates: October 10 to December 8

Schedule: 9:45 a.m. & 12:15 p.m.

N.B.: Please be sure to indicate your needs when you reserve.

TEACHER TRAINING

Elementary teachers and student teachers

Interested in learning more about how animals adapt and interact with each other and their ecosystems? What is climate change? And do you really know what biodiversity is and how to protect it? By the end of the day, you'll know just what an individual or class can do to protect the environment.
IN FRENCH ONLY

Length: 5.5 hours

Capacity: 60 people (maximum)

Location: Biodôme

Dates: Dates to be determined
(a private group can be arranged if there are more than 8 people)

Schedule: 9 a.m. to 3:30 p.m.

Cost: Free

Training is offered during the closing of the Biodôme.

Botanical Garden

THE VEGETABLE GARDEN REVISITED

Students with intellectual disabilities

In this workshop, students will get a close-up look at a plant from the vegetable garden.

As they examine vegetable plants, they'll discover that broccoli is a flower and that they eat roots, themselves! A look at composting and micro-shoots will help them become urban gardeners. A guided tour of the greenhouses rounds out this activity. The secrets of vanilla, chocolate, chewing gum and many other foods will be revealed. Discover some roots - in the air - and a bark that's used to flavour pastries! All are certain to pique children's curiosity.

Length: 90 minutes

Capacity: 2 classes

Location: Multipurpose rooms

Dates: March 13 to June 8

Schedule: 9:30 a.m. & 12:30 p.m.

USING ALL YOUR SENSES TO DISCOVER PLANTS

Students with intellectual disabilities

See description, page 10

Dates: March 13 to June 8

Frédéric Back Tree Pavilion

TREES UP CLOSE

Reception classes, groups with students with learning difficulties or mild intellectual disabilities

See description, page 12

Dates: October 4 to 27 & May 16 to June 8

OUR FRIENDS, THE BIRDS

Reception classes, groups with students with learning difficulties or mild intellectual disabilities

See description, page 10

Dates: October 4 to 27 & May 16 to June 8



Space for Life

CHECK OUT OUR WEBSITE
montrealspaceforlife.ca

ENRICHMENT ACTIVITIES

Teachers and students will find all sorts of games and documents on-line. There are classroom activities to help prepare for a trip to Space for Life or follow up afterward and expand on what your students learned during their visit.

espacepourelavie.ca/en/complementary-activities

Biodôme

PLANT AND ANIMAL FACT SHEETS

Do your students have research to do for a natural science project? They can consult the fact sheets on the Biodôme's animals and plants online.

espacepourelavie.ca/en/fauna-and-flora-biodome

Botanical Garden

TREES INSIDE OUT

Visit the *Trees Inside Out* virtual exhibition and discover a goldmine of information on trees, their environment, how they grow and the research being done on them.

aucoeurdelarbre.ca/en/

See the fact sheets:
aucoeurdelarbre.ca/en/branching-out/teachers/

A TREE IS A LIVING BEING!

Botanical Garden Arboretum Interpretation trail

Did you know trees make their own food? That they reproduce with the help of insects, birds and the wind? That they don't heal their wounds but seal them off them for the rest of their lives? The new interpretation stations now installed in the Arboretum hold many more fascinating secrets. Until you can discover them for yourself, check out the fact sheets on our website.

espacepourelavie.ca/en/complementary-activities/tree-living-being-fact-sheets

Insectarium

EXPLORATION RALLY

Join Proscio and explore the new exhibition at the Insectarium, *We Are the Insects*. You'll have lots of fun together!

Cycle one

Proscio puts on a party!

Our mascot, Proscio, is preparing a huge celebration for his friends the insects and needs your help to make everything perfect! Take a look around the Insectarium and find the things his guests would love.



Cycles two and three

Proscio investigates

It's a mystery! There's an assassin hiding in the Insectarium. Join Proscio and track him down. To find the guilty insect, you'll have to analyze the crime scene and look for clues in the exhibition. We're sure you'll be able to identify the guilty party pretty quickly.

Download the rally descriptions and pre-visit and follow-up activities, and print them before you come!

espacepourelavie.ca/en/educational-activities/discovery-rally

BUTTERFLIES GO FREE: STUDENTS IN ACTION

Preschool and elementary

Everyone loves butterflies! To help prepare for or wrap up your visit to *Butterflies Go Free*, there are all sorts of fun classroom activities available on our Website. Let the butterflies work their own special magic on you and your students!

espacepourelavie.ca/en/educational-activities/bug-bites-butterflies-go-free

CLASSROOM TOOLS

To learn more about monarch butterflies

JEU MONARQUE SANS FRONTIÈRE

Elementary cycle three and secondary 1

The monarch butterflies are flying off to Mexico! Follow them and share their adventures through this exciting board game, which comes with suggested activities and five insect cards describing monarchs' lives. IN FRENCH ONLY

Cost: \$15

Information and orders: 514 872-7097

A MONARCH'S LIFE POSTER

For all grades

This colourful poster describes the stages in the monarch butterfly's life cycle.

Cost: \$5

Information and orders: 514 872-7097

ACTIVITY SHEETS

All levels

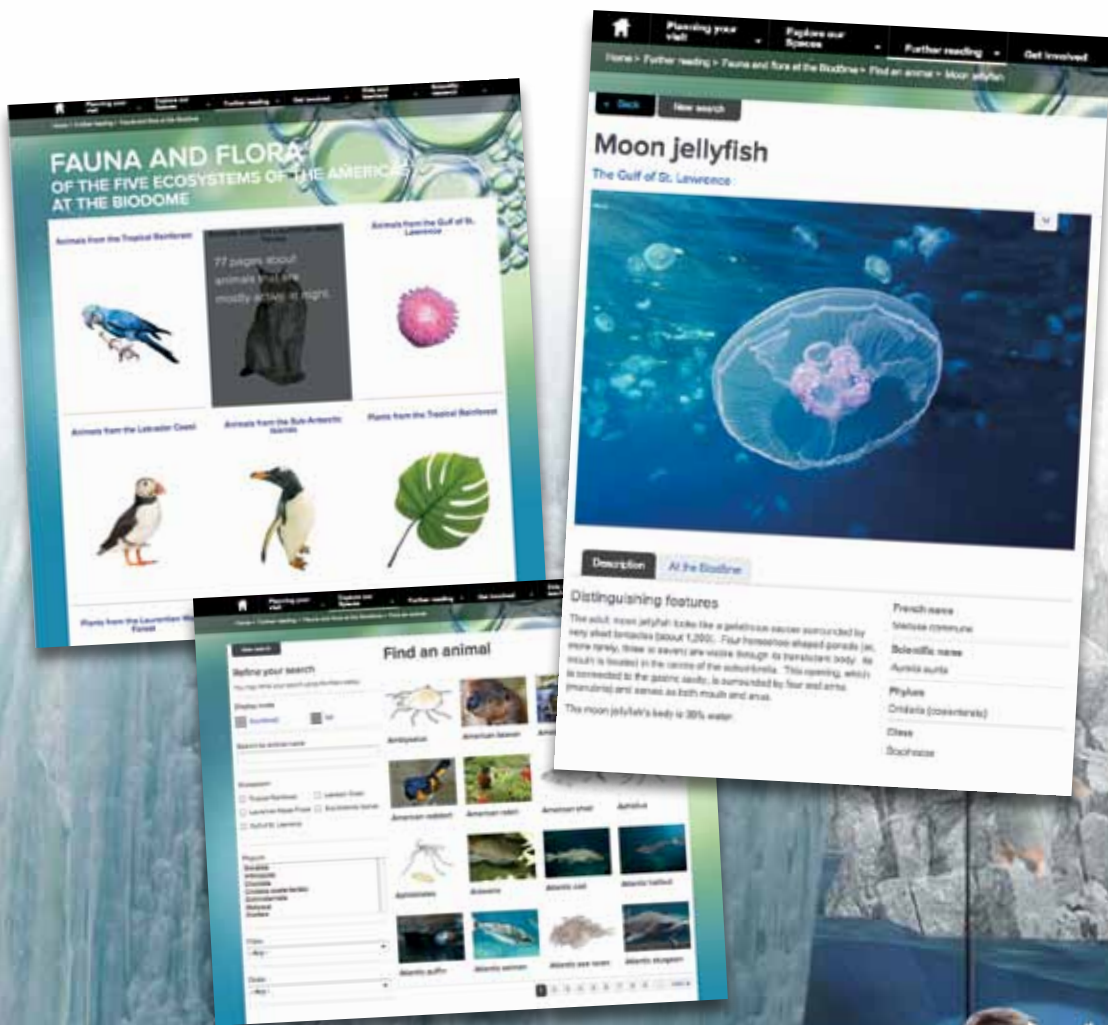
Consult our activity sheets to learn more about insects and other arthropods and how to observe, raise and collect them.

espacepourelavie.ca/en/insects-and-other-arthropods



The BIODÔME will be closed in 2018. You can expect a whole new museum experience when it reopens, in 2019! Until then, educational content is only a click away.

The secrets of New World plants and animals revealed! Consult the animal and plant fact sheets: espacepourlavie.ca/en/further-reading



The INSECTARIUM is open in 2018,
enjoy all the activities!
Details on the website or call us at 514 868-3000.

BUTTERFLIES GO FREE FEBRUARY 22 TO APRIL 29

Enjoy some purely magical moments in the heart of a greenhouse filled with thousands of fluttering butterflies! The experience is all the more precious in that we see them less often in the wild these days. Keep your eyes wide open. Savour the pleasure. And learn how to attract butterflies to your own yard next summer.

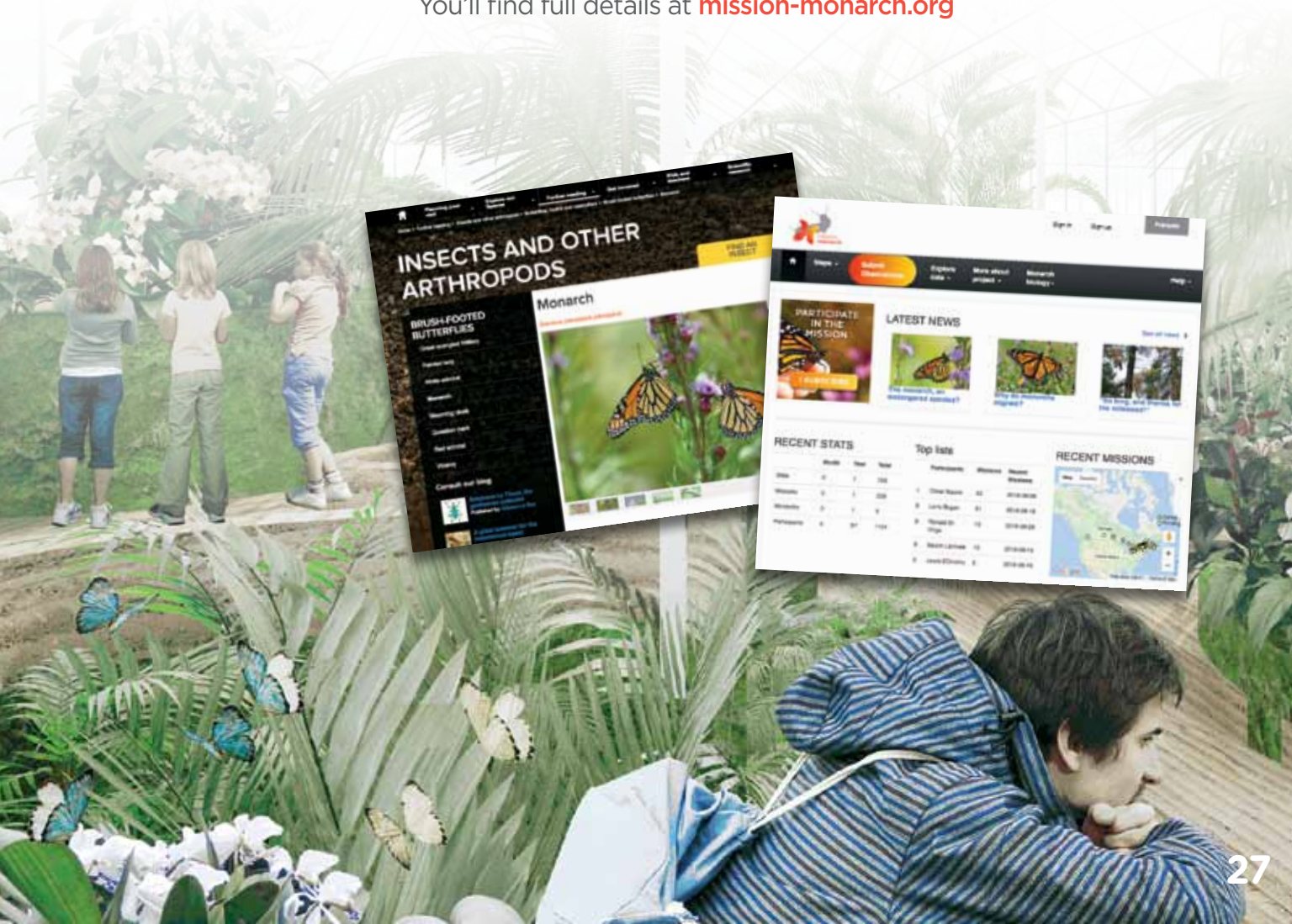


MISSION MONARCH

Monarchs are increasingly at risk. You and your students can help! Participate in the *Mission Monarch* research project, a fun way to help protect these majestic butterflies.

Plan some class outings to hunt for monarchs and their host plant, milkweed.

You'll find full details at mission-monarch.org



RESERVATION CONDITIONS

STUDENT SUPERVISION AND GROUP SIZE

Educational activities are designed on the assumption that the teacher and accompanying adults will stay with students throughout the tour and participate. We recommend that you plan to have accompanying adults in the following ratios:

- » One per five students, for preschool and elementary cycle one
- » One per ten students, for elementary cycles two and three and secondary



Means of payment

Payment may be made by certified cheque, school cheque, cash, credit card or debit card. Make cheques payable to the "Ville de Montréal," unless otherwise indicated when you reserve.

Rates

The 2017 rates listed below are in Canadian funds and include all taxes. Rates are subject to change without notice.

Unless otherwise indicated, there is no additional charge for educational activities.

Free admission for teachers

Teachers wishing to familiarize themselves with any of the museums before they come with their classes may ask for one free pass when they reserve.

GROUP RATES

	BIODÔME	BOTANICAL GARDEN + INSECTARIUM	RIO TINTO ALCAN PLANETARIUM	2 SITE PACKAGE Biodôme + Rio Tinto Alcan Planetarium OR Biodôme + Botanical Garden / Insectarium OR Botanical Garden / Insectarium + Rio Tinto Alcan Planetarium	SPACE FOR LIFE PACKAGE Botanical Garden / Insectarium + Biodôme + Rio Tinto Alcan Planetarium Available until February 9, 2018
GROUP RATES*					
Adults	\$13.75 (\$14 in 2018)	\$13.75 (\$14 in 2018)	\$13.75 (\$14 in 2018)	\$24.50 (\$24.75 in 2018)	\$35.25 (\$35.50 in 2018)
Ages 5 to 17	\$7	\$7 \$	\$7 \$	\$12.25 (\$12.50 in 2018)	\$17.50 (\$18 in 2018)
Ages 0 to 4**	Free	Free	Free	Free	Free
Length of self-guided tour	Minimum 1 hour	Greenhouses: 30 min to 1 hour Outdoor Gardens: 1 to 4 hours Insectarium: 30 min to 1 hour	Recommended for ages 7 and up Minimum 2 hours	Minimum 2.5 hours	Minimum 4 hours

To add the Montréal Tower, please call 514 252-4737.

*Group rates apply to groups of 15 paying visitors or more. Individual rates are available on request.

**For groups of ages 0-4, a \$3/child fee may be charged for the use of specific services.

Free admission: One complimentary ticket for the bus driver, one for the class teacher and one complimentary ticket for each group of 20 paying visitors (21st visitor free). These tickets are not transferable.

RESERVATION FORM

School Groups



SPACE IS LIMITED! PLEASE RESERVE EARLY!

Please complete this form and e-mail it to us at reservationspacevie@ville.montreal.qc.ca or fax it to 514 872-5476. This form is also available on our website, at montrealspaceforlife.ca/reservations

IMPORTANT: Please remember that your visit has not been reserved until you have received your confirmation letter. You should receive the letter within five working days.

For packages including the Montréal Tower, please call 514 252-4737.

Contact name: _____ Title: _____
Name of school / preschool / daycare: _____
Group name: _____
Address: _____ E-mail: _____
City/Town: _____ Telephone: _____
Postal code: _____ Fax: _____
 I would like to receive the *School Newsletter*

RESERVATION REQUESTED

DATE OF VISIT: _____ ARRIVAL TIME: _____

BIODÔME

Self-guided tour

BOTANICAL GARDEN / INSECTARIUM

Self-guided tour

RIO TINTO ALCAN PLANETARIUM

Shows (*recommended for ages 7 and up*)

Teachers wishing to familiarize themselves with any of the institutions before they come with their classes may ask for one free pass when they reserve.

RESERVATION DETAILS

	No. of adults	No. of children ages 5-17	No. of children ages 0-4
Class 1			
Class 2			
Class 3			
Class 4			
Total			

Activity requested (if any):

NAME OF ACTIVITY	DATES day/month/year	TIME
1st choice		
2nd choice		
3rd choice		

MEALS* Lunch times are scheduled depending on room availability. Please check your confirmation letter.

BIODÔME

11:10 a.m. 11:50 a.m. 12:30 p.m.

BOTANICAL GARDEN / INSECTARIUM

11 a.m. 11:45 a.m. 12:30 p.m. 1:15 p.m.





RIO TINTO ALCAN PLANETARIUM

According to show schedule

*For groups of ages 0-4, a \$3/child fee may be charged for the use of specific services.

SPECIAL REQUESTS AND COMMENTS

GENERAL INFORMATION

	BIODÔME	INSECTARIUM	BOTANICAL GARDEN	RIO TINTO ALCAN PLANETARIUM
ADDRESS	4777, av. Pierre-De Coubertin Montréal, Quebec H1V 1B3	4581, rue Sherbrooke Est Montréal, Quebec H1X 2B2	4101, rue Sherbrooke Est Montréal, Quebec H1X 2B2	4801, av. Pierre-De Coubertin Montréal, Quebec H1V 3V4
INFORMATION AND GROUP RESERVATIONS	514 868-3000 / Fax: 514 872-5476 reservationspacevie@ville.montreal.qc.ca			
HOURS	Open Tuesday to Sunday from September 5 until it closes for renovation. From 9 a.m. to 5 p.m.	Open everyday until November 3 and Tuesday to Sunday until it closes for renovation, on January 1. From 9 a.m. to 5 p.m. (9 p.m. in fall)	Open everyday until November 3 and Tuesday to Sunday until May 18. 9 a.m. to 5 p.m. (9 p.m. in fall)	Open Tuesday to Sunday from September 4 to June 22 and every day the rest of the year. For opening and show times, check montrealspaceforlife.ca or call 514 868-3000.
ACCESS	 Viau station Free parking for buses at 3000 and 3200 Viau	 Pie-IX or Viau station Free parking for buses at 4581, Sherbrooke Est, at the Maisonneuve Park entrance	 Pie-IX station Free parking for buses at 4101, Sherbrooke Est. For the Frédéric Back Tree Pavilion at 4500 Rosemont Blvd. (at 29 th Avenue)	 Viau station Free parking for buses at 3000 and 3200 Viau
RECEPTION*	Groups will be greeted at the ticket counter at the entrance shared by the Biodôme and the Rio Tinto Alcan Planetarium (enter via parking lot at 3200 Viau).	School groups will be met at the gate or in the Insectarium lobby 15 minutes before the activity starts.	Depending on the activity, groups will be welcomed at the Reception Centre or the Frédéric Back Tree Pavilion 15 minutes before it starts.	Groups will be greeted at the ticket counter at the entrance shared by the Biodôme and the Rio Tinto Alcan Planetarium (enter via parking lot at 3200 Viau).
CLOAKROOM	Available by reservation (free). Limited space available.			
LUNCH ROOM	Seats are available by reservation for those who bring their lunch (120 seats). The cafeteria is available for groups wishing to buy their lunch on site (reservation required).	There is no lunch room available at the Insectarium. However, all the Botanical Garden facilities are available (some by reservation).	The lunch room is available by reservation (80 seats), for those who bring their lunch. The Tree Pavilion has picnic tables for two classes (60 seats). No reservations are required for the Maisonneuve Park chalet.	Seats are available by reservation for those who bring their lunch (120 seats). The cafeteria is available for groups wishing to buy their lunch on site (reservation required).



* For safety reasons, the Botanical Garden auditorium and the Rio Tinto Alcan Planetarium theatres cannot accommodate, respectively, more than four and three wheelchairs at one time.

CANADA'S LARGEST NATURAL SCIENCE MUSEUM COMPLEX

