



Butterflies Go Free

Mysterious Chrysalis

A butterfly's life cycle

There are four different stages in a butterfly's life cycle: **egg**, **caterpillar**, **chrysalis** and **adult**.

Once the caterpillar is fully grown, it turns into a chrysalis. Inside the chrysalis, it metamorphoses into an adult butterfly or moth.

The butterfly or moth emerges fairly quickly, but has to spread its wings and let them dry for several hours before taking its first flight.



Morpho helenor
Blue morpho



Idea leuconoe
Rice paper

True gems from around the globe



The chrysalis

From the Greek word *khrusos*, which means "gold."

It may look motionless and fragile, but inside and out of sight, a transformation is taking place.

Chrysalises come in an amazing variety of shapes, colours, sizes and textures. Some of them look like a bud, a green leaf, a dead leaf, plant litter, bark or even bird droppings, while others have defensive spines. All these strategies allow the insect, which is vulnerable at this stage in its life, to avoid or discourage predators.

Appearances can be deceiving



- 1 *Amauris ochlea*
- 2 *Danaus plexippus*
- 3 *Euploea core*
- 4 *Tithorea tarricina*
- 5 *Philaethria dido*
- 6 *Troides rhadamantus*
- 7 *Papilio anchisiades*
- 8 *Hypolimnas bolina*
- 9 *Limenitis archippus*
- 10 *Papilio memnon*
- 11 *Heliconius hewitsoni*

Some fabulous butterflies and moths and their mysterious chrysalises



Graphium agamemnon • Tailed jay



Pachliopta kotzebuea • Pink rose



Morpho polyphemus • White morpho



Caligo sp. • Owl butterfly

See if you can spot these butterflies and moths in the greenhouse.



Dryas julia
Julia



Dryadula phaetusa
Banded orange



Heliconius melpomene
Postman



Papilio lowi
Asian swallowtail



Papilio polytes
Common Mormon



Papilio polyxenes
Black swallowtail



Papilio rumanzovia
Rumanzovia swallowtail



Papilio palinurus
Banded peacock



Troides rhadamantus
Small troides



Parides iphidamas
Transandean cattleheart



Papilio thoas
Thoas swallowtail



Phoebis philea
Orange-barred sulphur



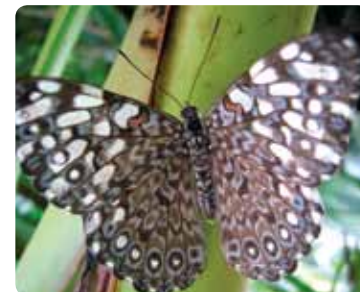
Danaus chrysippus
African monarch



Danaus plexippus
Monarch



Siproeta stelenes
Malachite



Hamadryas feronia
Feronia cracker



Parthenos sylvia
Clipper



Hypolimnas bolina
Great eggfly bolina



Archaeoprepona demophon
One-spotted prepona

What about cocoons?

All caterpillars, without exception, turn into a chrysalis from which a butterfly or moth eventually emerges.

For many moths, once the caterpillar reaches the final stage in its growth, it weaves a silk cocoon for itself. Inside this shelter, it turns into a chrysalis. The cocoon shelters it from the elements and hides it from its predators.



Attacus atlas • Cobra moth



Actias luna
Luna moth



Antheraea polyphemus
Polyphemus moth



Hyalophora cecropia
Cecropia moth